

# TENDER BULLETIN

NO.31 OF 2017/18 FY

10 November 2017



# LIMPOPO

**PROVINCIAL GOVERNMENT**  
REPUBLIC OF SOUTH AFRICA

This document is also available on the internet on the following website:

[www.limtreasury.gov.za](http://www.limtreasury.gov.za)

# Provincial Supply Chain Management Office

## TABLE OF CONTENTS

	<b>Page No.</b>
1. REPORTING FRAUDULENT AND CORRUPT ACTIVITIES.....	03
2. INSTRUCTIONS.....	04
3. BID INVITATIONS FOR SUPPLIES, SERVICES AND DISPOSALS .....	05
4. LIST OF AWARDED BIDS.....	06
5. CANCELLED BIDS.....	07
5. SPECIAL NOTICE.....	08-09
ANNEXURE 1: ADDRESS LIST AND CONTACT DETAILS: PROVINCIAL DEPARTMENTS.....	10
ANNEXURE 2: ADDRESS LIST AND CONTACT DETAILS: PUBLIC ENTITIES.....	11
ANNEXURE 3: ADDRESS LIST AND CONTACT DETAILS: PROVINCIAL TREASURY TENDER ADVICE CENTRES .....	12
ANNEXURE 4: ADDRESS LIST AND CONTACT DETAILS: SATELLITE OFFICES .....	13
8. SELF REGISTRATION PROCESS.....	14

**REPORT**

**FRAUDULENT & CORRUPT ACTIVITIES ON GOVERNMENT PROCUREMENT SYSTEM**

---

***National Anti-Corruption @ 0800 701 701***

***Security and Investigating Services – Limpopo Provincial Treasury @ 015 298 7196***

---

**ALL COMPLAINTS/CONCERNS RELATED TO SCM NON-COMPLIANCE MUST BE REPORTED TO:**

**LIMPOPO PROVINCIAL TREASURY**

**PRIVATE BAG X 9486**

**POLOKWANE**

**0700**

**PROVINCIAL TREASURY, FINANCE HOUSE, 56 – 58 PAUL KRUGER STREET, POLOKWANE**

## 2. INSTRUCTIONS

1. Bidders are advised to read the entire tender bulletin.
2. Tenders for procurement of supplies, services and disposals are categorized as follows:

### **SUPPLIES**

- Accommodation, leasing of
- Audio visual equipment
- Building material
- Chemicals: Agricultural/Forestry/
- Laboratory/Water Care
- Clothing/Textiles
- Computer equipment
- Computer software
- Electrical equipment
- Electronic equipment
- Furniture
- General
- Medical
- Office equipment: Labour-saving devices
- Perishable provisions
- Stationary/printing
- Steel
- Timber
- Vehicle (all types)
- Workshop equipment

### **SERVICES**

- Building
- Civil
- Electrical
- Functional (including cleaning-, and security services)
- General
- Maintenance of electrical, mechanical equipment and plumbing
- Mechanical
- Professional
- Repair and maintenance of vehicles
- Transport

### **DISPOSALS**

- Clothing and textiles
- Furniture
- General
- Scrap metal
- Vehicles

3. Bid documents are generally available in English only.
4. The address where a bid document is available from and where it must be submitted to may differ.
5. The addresses at which bid documents may be obtained and to which tenders must be posted, appear in Annexure 1.
6. The address list of various Supply Chain Management Advice Centres at which bid documents and tender bulletins may also be obtained, appear in Annexure 3; and
7. The address list of Supply Chain Management satellite offices at which tender bulletins may also be obtained, appear in Annexure 4.

3. BID INVITATIONS FOR SUPPLIES, SERVICES AND DISPOSALS

BID NO.	DESCRIPTION OF SERVICE OR SUPPLIES	CONTACT DETAILS	BID DOCUMENT PRICE (NON-REFUNDABLE)	DUE AT 11H00	BID DOCUMENTS OBTAINABLE FROM	POST OR DELIVER BIDS TO
					See Annexure 1 & 2, Page 10 & 11	

EDET 231/17	The development of a Heritage Management Plan for Nature Reserves in Limpopo: Phase one  <b>Department Economic Development</b>	<b>ADMINISTRATION PROCESS</b> Ms. Linda Mothutsi @ <b>Tel no:</b> 015 293 8766  <b>TECHNICAL ASPECTS</b> T Malungani @ <b>Cell no:</b> 082 888 9847	R80-00	01/12/2017	109	109
DSDP 04/17	Management of Mavambe child and Youth Care Centre  <b>BRIEFING SESSION:</b>  <b>Date:</b> 28/11/2017 <b>Venue:</b> Mavambe Child and Youth Care Centre <b>Time:</b> 10H00  <b>Department of Social Development</b>	<b>ADMINISTRATION PROCESS</b>  NP Thobejane @ <b>Tel no :</b> 015 230 4440 or <b>Cell no:</b> 081 303 4207and  M H Mamabolo @ <b>Tel no:</b> 015 230 4356 or <b>Cell no:</b> 082 829 5372  <b>TECHNICAL ASPECTS</b> JV Malebatja @ <b>Tel no:</b> 015 230 4353.	R80-00	08/12/2017	100	100

4. LIST OF AWARDED BIDS

OFFICE OF THE PREMIER

<b>BULLETIN NO</b>	<b>BID NUMBER</b>	<b>DESCRIPTION SERVICE PROVIDER</b>	<b>SERVICE PROVIDER</b>	<b>AWARDED DATE</b>	<b>AMOUNT</b>	<b>TOTAL POINTS ATTAINED</b>
19 OF 2017/18 FY	PRDP 15/2017	PRDP 15/2017 Provision of Customer contact service for the establishment of the Premier's Hotline	Delloited and Touche	31/10/2016	R2 398 800-00	98-00

<b>CANCELLATION OF BIDS</b>
-----------------------------

**LIMPOPO TOURISM AGENCY**

<b>BID NO</b>	<b>DESCRIPTION</b>	<b>BULLETIN NUMBER</b>	<b>DATE ADVERTISED</b>	<b>DATE CLOSED</b>	<b>REASON FOR CANCELLATION</b>
LTA012-17/18	TV Broadcasting	21 of 2017/18 FY	01/09/2017	22/09/2017	<i>No acceptable bids were received</i>
LTA014-17/18	Printing and TV Production	21 of 2017/18 FY	01/09/2017	22/09/2017	<i>No acceptable bids were received</i>
LTA017-17/18	Print Media	21 of 2017/18 FY	01/09/2017	22/09/2017	<i>No acceptable bids were received</i>
LTA026-17/18	Leasing of Office Space in Sekhukhune Region	20 of 2017/18 FY	18/08/2017	11/09/2017	<i>No acceptable bids were received</i>
LTA027-17/18	Leasing of Office Space in Waterberg Region	20 of 2017/18 FY	18/08/2017	11/09/2017	<i>No acceptable bids were received</i>

**5. SPECIAL NOTICES**

**5.1 DEPARTMENT OF HEALTH**

**EXTENSION OF CLOSING DATE FOR BID: HEDP045/17 SUPPLY AND DELIVERY OF MEDICAL ORTHOTICS, PROSTHETICS AND OCCUPATIONAL THERAPY CONSUMABLES TO THE DEPARTMENT OF HEALTH: LIMPOPO PROVINCE**

1. Kindly note that the closing date for the above mentioned Bid was advertised in the Tender Bulletin No. 28 of 2016/17 FY dated 20 October 2017 with a closing date of 10 November 2017. The Bid has been postponed as follows:

<b>Initial closing date</b>	<b>New closing date</b>
10 November 2017	24 November 2017

2. The compulsory briefing session for this bid was held on 31 October 2017. The reason for extending the closing date is to give bidders enough time to respond to the bid as it requires Declaration of Local content.

**5. 2 DEPARTMENT OF LIMPOPO PROVINCIAL TREASURY**

5.2.1. Notice to Suppliers: All Service Providers are required to update their profiles on the CSD i.r.o Directors/ Contact for Bid Office and Industrial Classification as a matter of urgency.

**5. 2.2 (SCM Advice Centers): LIMPOPO PROVINCIAL TREASURY  
ADVERTISEMENTS OF LIMPOPO CSD CALL CENTRE LINES FOR SUPPLIERS**

LIMPOPO CSD CALL CENTRE LINES FOR SUPPLIERS

<b>DISTRICT</b>	<b>CALL CENTRE NUMBER</b>	<b>OFFICIAL RESPONSBLE</b>	<b>TIME</b>
Head Office	015 291 2684	Mr.Muthivhi MC	07H30 TO 16H30
Mopani	015 812 0256	Ms. Nxumalo P	07H30 TO 16H30
Sekhukhune	013 265 1071	Mrs Morena MM	07H30 TO 16H30
Vhembe	015 962 0014	Mrs. Nefolovhodwe MQ	07H30 TO 16H30
Waterberg	014 717 1376	Mrs. Tsatsi AT	07H30 TO 16H30



## LIMPOPO PROVINCIAL TENDER BULLETIN NO 31 OF 2017/18 FY, 10 NOVEMBER 2017

### 5.2.3 SCM Advice Centres): LIMPOPO PROVINCIAL TREASURY SUPPLIER DATABASE ROADSHOW AS PER DISTRICT:-

#### CAPRICORN SUPPLY CHAIN MANAGEMENT ADVICE CENTRE (Centralized Supplier Database Roadshow program)

DATE	MUNICIPALITY	VENUE	TARGET	TIME
23/11/2017	Lepelle-Nkumpi	Leb/Kgomo Government Complex	SUPPLIERS 100	10H00

For more information please contact Ms. Masindi MM at Tel. 015 291 8424

#### MOPANI SUPPLY CHAIN MANAGEMENT ADVICE CENTRE (Centralized Supplier Database Roadshow program)

DATE	MUNICIPALITY	VENUE	TARGET	TIME
23/11/2017	Maruleng	Hlohlokwe Community Hall	SUPPLIERS 100	10H00

For more information please contact Mr. Mbedzi MB at Tel. 015 812 0149

#### VHEMBE SUPPLY CHAIN MANAGEMENT ADVICE CENTRE (Centralized Supplier Database Roadshow program)

DATE	MUNICIPALITY	VENUE	TARGET	TIME
16/11/2017	Lim 345	Mhinga Hall	SUPPLIERS 100	10H00

For more information please contact Ms. A Manena at Tel. 015 962 1752

#### WATERBERG SUPPLY CHAIN MANAGEMENT ADVICE CENTRE (Centralized Supplier Database Roadshow program)

DATE	MUNICIPALITY	VENUE	TARGET	TIME
16/11/2017	Lephalale	Traffic Centre	SUPPLIERS 100	10H00

For more information please contact Mr. Mogoroga PE at Tel. 014 717 5837

# LIMPOPO PROVINCIAL TENDER BULLETIN NO 31 OF 2017/18 FY, 10 NOVEMBER 2017

## ANNEXURE 1: ADDRESS LIST AND CONTACT DETAILS: LIMPOPO PROVINCIAL DEPARTMENTS

UNIQUE REF. NO.	BID DOCUMENT REFERENCE	CONTACT DETAILS	DOCUMENTS SOLD AT:	DOCUMENTS DEPOSITED AT
100	DSDP	Tel: 015 293 6000 Fax: 015 293 6211 Website: <a href="http://www.limpopo.gov.za">www.limpopo.gov.za</a>	<b>Department of Social Development</b> , Office No. 57 Ground Floor, 21 Biccadd Street POLOKWANE	Deposited in the box located at Department of Social Development, 21 Biccadd Street Polokwane
101	LPT	Tel: 015 298 7000 Fax: 015 295 7010 Website: <a href="http://www.limpopo.gov.za">www.limpopo.gov.za</a>	<b>Provincial Treasury</b> 46 Hans Van Rensburg Street, POLOKWANE and all Provincial Treasury Tender Advice Centres	Deposited in the bid box located outside a guard house at Ismini Towers, 46 Hans Van Rensburg Street, Polokwane
101A	TC/LP	Tel: 015 291 8400 Fax: 015 295 3310 Website: <a href="http://www.limpopo.gov.za">www.limpopo.gov.za</a>	<b>Provincial Treasury</b> 56 – 58 Paul Kruger Street, POLOKWANE and all Provincial Treasury Tender Advice Centres	Deposited in the bid box located in the main entrance, Finance House Building, 56-58 Paul Kruger Street, Polokwane
102	PRDP	Tel: 015 287 6000 Fax: 015 295 3840 Website: <a href="http://www.limpopo.gov.za">www.limpopo.gov.za</a>	<b>Office of the Premier</b> , 40 Hans van Rensburg Street, POLOKWANE and all SCM Advice Centres	Deposited in the bid box located at Mowaneng Building, 40 Hans van Rensburg Street, Polokwane
103	HEDP	Tel: 015 293 6000 Fax: 015 293 6211 Website: <a href="http://www.limpopo.gov.za">www.limpopo.gov.za</a>	<b>Department of Health</b> , Office No. D3 Ground Floor, Old Capricorn Building, 18 College Street, POLOKWANE and all Provincial Treasury Tender Advice Centres	Deposited in the box located at Department of Health and Social Development, 18 College Street, Polokwane
104	LPEDT	Tel: 015 290 7600/1 Fax: 015 297 4494 Website: <a href="http://www.limpopo.gov.za">www.limpopo.gov.za</a>	<b>Department of Education</b> , Corner 113 Biccadd and 24 Excelsior Streets, POLOKWANE and all Provincial Treasury Tender Advice Centres	Deposited in the bid box located in the main entrance of corner 113 Biccadd Street and Excelsior Street, Polokwane
105	PUDP	Tel: 015 295 1000 Fax: 015 295 1163 Website: <a href="http://www.limpopo.gov.za">www.limpopo.gov.za</a>	<b>Department of Roads &amp; Transport</b> , 40 Paul Kruger Street, POLOKWANE and all Provincial Treasury Tender Advice Centres	Deposited in the bid box located at 1 <sup>st</sup> Floor, Paul Kruger Wing, 40 Paul Kruger Street, Polokwane
106	DSSL	Tel: 015 290 2900 Fax: 015 291 4452 Website: <a href="http://www.limpopo.gov.za">www.limpopo.gov.za</a>	<b>Department of Safety, Security and Liaison</b> , 32 Schoeman Street, POLOKWANE and all Provincial Treasury Tender Advice Centres	Deposited in the bid box located in the main entrance of 32 Schoeman Street, Polokwane
107	COGHSTA	Tel: 015 294 2000 Fax: 015 295 4190 Website: <a href="http://www.limpopo.gov.za">www.limpopo.gov.za</a>	<b>Department of Co-Operative Governance, Human Settlements &amp; Traditional Affairs</b> , 28 Market Street, Office No. G 74, Ground Floor, Polokwane.	Deposited in the bid box located at Hensa Towers, Cnr of Rabe and Landdros Mare Streets, Polokwane
108	DSAC	Tel: 015 284 4000 Fax: 015 284 4514 Website: <a href="http://www.limpopo.gov.za">www.limpopo.gov.za</a>	<b>Department of Sport, Arts and Culture</b> Olympic Towers, Corner Rabe and Biccadd Street, POLOKWANE and all Provincial Treasury Tender Advice Centre	Deposited in the bid box located in the main entrance of Olympic Towers, Corner 21 Rabe and Biccadd Street, Polokwane
109	LEDET	Tel: 015 293 8300 Fax: 015 293 8319 Website: <a href="http://www.limpopo.gov.za">www.limpopo.gov.za</a>	<b>Department of Economic Development, Environment &amp; Tourism</b> , 90 Bok Street, POLOKWANE and all SCM Advice Centres	Deposited in the bid box located in the main entrance of Evridiki Towers, 19 Biccadd Street, Polokwane
110	LDPW & WODP	Tel: 015 284 7000 Fax: 015 284 7031 Website: <a href="http://www.limpopo.gov.za">www.limpopo.gov.za</a>	<b>Department of Public Works, Roads and Infrastructure</b> ; Towers, 43 Church Street, POLOKWANE and all Provincial Treasury Tender Advice Centres	Deposited in the bid box located at Corner Blaawberg and River Street Ladanna Polokwane 0699 Private Bag X9490 Polokwane 0700
111	ACDP	Tel: 015 294 3000/30/60/90/20 Fax: 015 294 4506 Website: <a href="http://www.limpopo.gov.za">www.limpopo.gov.za</a>	<b>Department of Agriculture</b> , Temo Towers, 69 Biccadd Street, POLOKWANE and all Provincial Treasury Tender Advice Centres	Deposited in the bid box located in the main entrance of AgriVillage, 69 Biccadd Street, Polokwane

# LIMPOPO PROVINCIAL TENDER BULLETIN NO 31 OF 2017/18 FY, 10 NOVEMBER 2017

## ANNEXURE 2: ADDRESS LIST AND CONTACT DETAILS: LIMPOPO PUBLIC ENTITIES

UNIQUE REF. NO.	BID DOCUMENT REFERENCE	CONTACT DETAILS	DOCUMENTS SOLD AT:	DOCUMENTS DEPOSITED AT
112	RFB: LIMP	Tel: 015 293 3621 Fax: 015 293 3660 Website: <a href="http://www.golimpopo.co">www.golimpopo.co</a>	<b>State Information Technology Agency (SITA)</b> Limpopo Office, Moolman Building, 27 Market Street, POLOKWANE, 0699	Bid box located in the Main Entrance of Moolman Building, 27 Market Street, Polokwane
113	LTA	Tel: 015 293 3600 Fax: 015 293 3655 Website: <a href="http://www.golimpopo.com">www.golimpopo.com</a>	<b>Limpopo Tourism Agency,</b> ERF 92/688, Portion 2 Southern Gateway, Ext 4, N1 Main Road, Polokwane 0699	Bid box located in the offices ERF 92/688, Portion 2 Southern Gateway, Ext 4, N1 Main Road, Polokwane 0699
114	LGB	Tel: 015 295 5581 Fax: 015 295 3566 Website: <a href="http://www.lgb.org">www.lgb.org</a>	<b>Limpopo Gambling Board,</b> 22 Schoeman Street, POLOKWANE, from 08H30 to 16H00	Bid box located in the main entrance, ground floor, 22 Schoeman Street, Polokwane
115	LEDA	Tel: 015 633 4700 Fax: 015 633 4854 Website: <a href="http://www.leda.co.za">www.leda.co.za</a>	<b>Limpopo Economic Development Agency</b> Enterprise Development Finance, Main Road Lebowakgomo	Bid box located in the main entrance, Enterprise Development Finance, Main Road Lebowakgomo
116	RAL	Tel: 015 284 4600 Fax: 015 284 4701 Website: <a href="http://www.ral.co.za">www.ral.co.za</a>	<b>Road Agency Limpopo (RAL),</b> RAL Towers, 26 Rabe Street, POLOKWANE, 0700	Bid box located in the entrance foyer (ground floor) of RAL Towers, at 26 Rabe Street, Polokwane
117	GAAL	Tel: 015 288 0122 Fax: 015 288 0346 Website: <a href="http://www.gaal.co.za">www.gaal.co.za</a>	<b>Gateway Airports Authority Limited,</b> N1 Road to Louis Trichardt, Army Base, POLOKWANE International Airport, Polokwane, 0700	Bid box located in the main entrance, ground floor of administration building, Polokwane International Airport, Army Base
118	VIVET	Tel: 015 963 3156 Fax: 015 963 3154 Website: <a href="mailto:www.fetcol@mweb.co.za">www.fetcol@mweb.co.za</a>	<b>Vhembe FET College,</b> Stand No. 203, Unit A, Sibasa, 0970, Limpopo Province	Vhembe Fet College, Central Office, Private Bag X2136, SIBASA 0970
119	WTVET	Tel: 015 491 8581/8602 Fax: 015 491 8579 Website: <a href="http://www.procurement@waterbergcollege.co.za">www.procurement@waterbergcollege.co.za</a>	<b>Waterberg FET College,</b> Central Office, 36 Hooge Street Street, Mokopane, 0600	<b>Waterberg FET College,</b> Central Office, 36 Hooge Street Street, Mokopane, Private Bag x 2449, Mokopane 0600

**LIMPOPO PROVINCIAL TENDER BULLETIN NO 31 OF 2017/18 FY, 10 NOVEMBER 2017**

**ANNEXURE 3: ADDRESS LIST AND CONTACT DETAILS: PROVINCIAL TREASURY TENDER ADVICE CENTRES**

(Tender bulletins and bid documents are obtainable from the following Centers):

<b>PROVINCIAL TREASURY SUPPLY CHAIN MANAGEMENT ADVICE CENTRES</b>	
<p><b>HEAD OFFICE</b></p> <p>Provincial Supply Chain Management Office 56 – 58 Paul Kruger Street POLOKWANE Private Bag x9494 <b>POLOKWANE, 0700</b> <b>Tel No. (015) 291 8400</b></p> <p>Contact: <b>Ms. M.BRakubu</b> @ Tel: 015 291 8717/6</p>	<p><b>Capricorn SCM Advice Centre</b></p> <p>Limpopo Provincial Treasury 56-58 Paul Kruger Street Private Bag x9494 <b>POLOKWANE, 0700</b> <b>Tel No. (015) 291 8400</b></p> <p>Contact Person: <b>Ms. M.M. Masindi</b></p>
<p><b>Vhembe SCM Advice Centre</b></p> <p>Limpopo Provincial Treasury Government Building Complex BLOCK E GROUND FLOOR <b>THOHOYANDOU, VENDA</b> Tel: (015) 962 1752 Fax: (015) 962 1282</p> <p>Contact Person: <b>Ms. A Manena</b></p>	<p><b>Mopani SCM Advice Centre</b></p> <p>Limpopo Provincial Treasury Private Bag X 1973 <b>GIYANI, 0826</b> Tel: (015) 812 0149 Fax: 086 219 7905</p> <p>Contact Person: <b>Mr. M. B. Mbedzi</b></p>
<p><b>Waterberg SCM Advice Centre</b></p> <p>Limpopo Provincial Treasury 98 Nelson Mandela Street Decimale Building <b>MODIMOLLE</b> Tel: (014) 717 5837 Fax: (014) 717 5670</p> <p>Contact Person: <b>Mr. P.E. Mogoroga</b></p>	<p><b>Sekhukhune SCM Advice Centre</b></p> <p>Limpopo Provincial Treasury Lefa Centre, Schoonoord Road <b>JANE FURSE</b> Tel: (013) 265 1344 Fax: (013) 265 1354</p> <p>Contact Person: <b>Mr. M. S. Sehale</b></p>

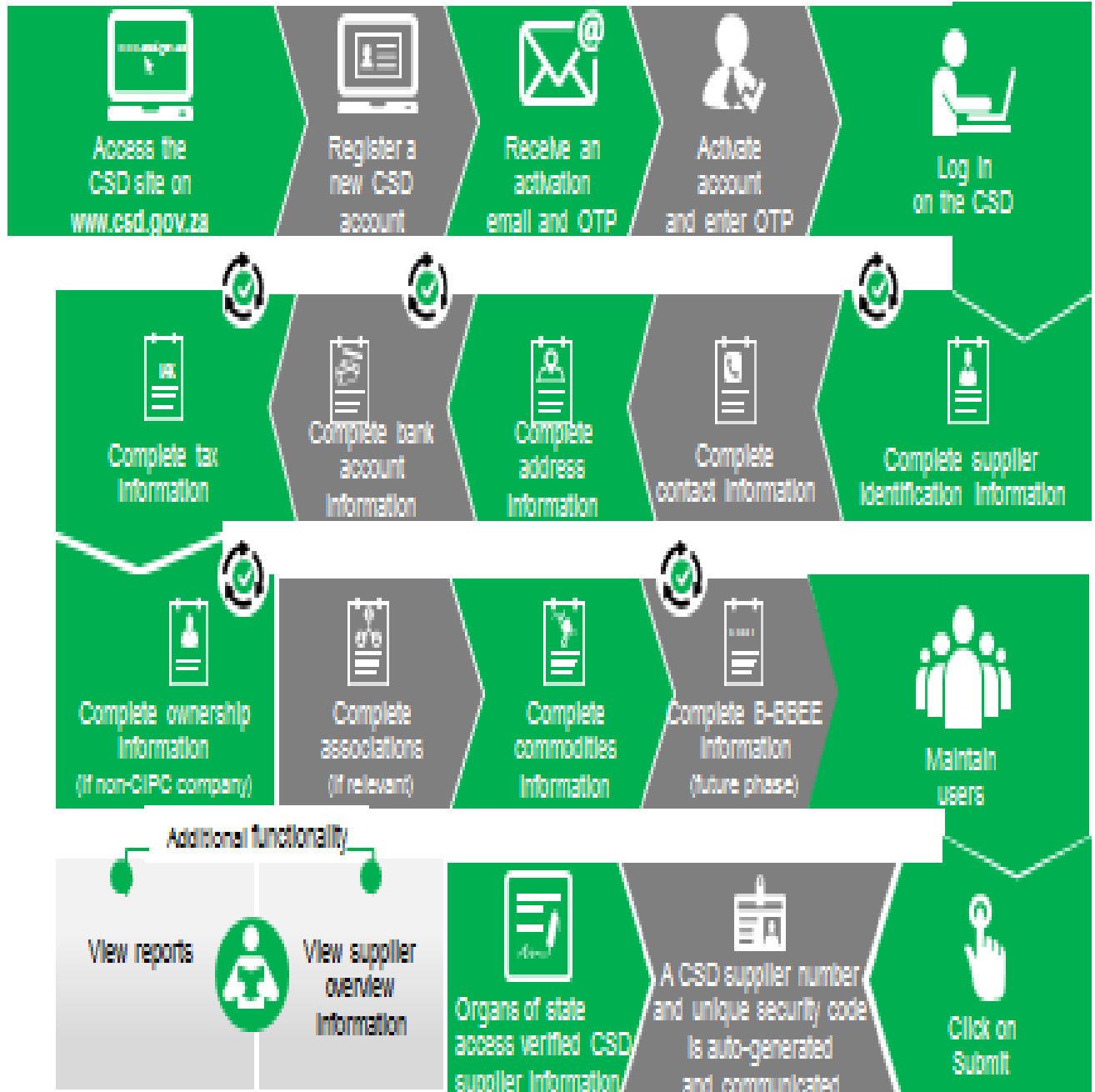
# LIMPOPO PROVINCIAL TENDER BULLETIN NO 31 OF 2017/18 FY, 10 NOVEMBER 2017

## ANNEXURE 4: ADDRESS LIST AND CONTACT DETAILS: SATELLITE OFFICES

(Tender bulletins are obtainable from the following centers)

CAPRICORN	VHEMBE	MOPANI	WATERBERG	SEKHUKHUNE
			Libsa Thabazimbi: No.08 Riet Bok Street Tel. No. (014) 772 2437	
			Libsa Lephale No. 3A Venter Street Tel. No. (014) 763 2834	

# Supplier Self-Registration Process



Auto verification of supplier information with SARS, GIPC etc